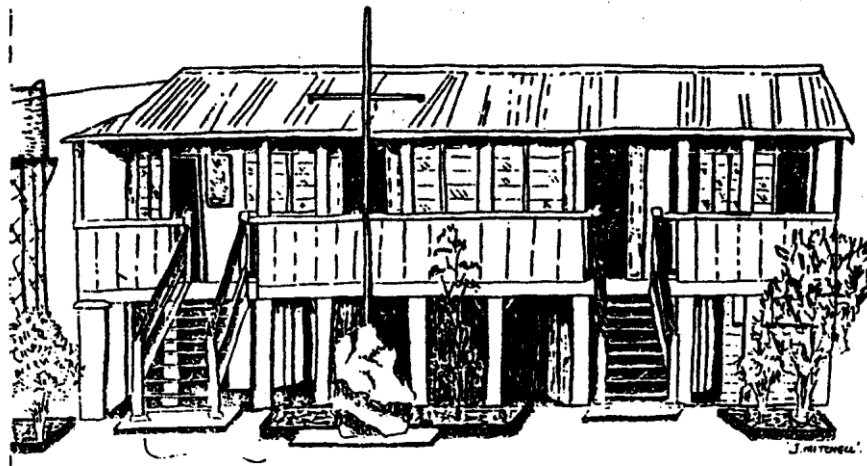


PARENT HANDBOOK

OSBORNE STATE SCHOOL

**Kirknie Road
Home Hill**



Established 1914

The staff, students and parents of Osborne State School welcome you to our community. At Osborne we strive to create a safe, supportive and disciplined environment within which our children can prepare for success in life's future challenges.

To enhance learning outcomes for your child we encourage you to support your children as they strive for excellence in the variety of learning experiences that will be offered across all curriculum areas.

Principal

Hayley Laidlow

LOCATION

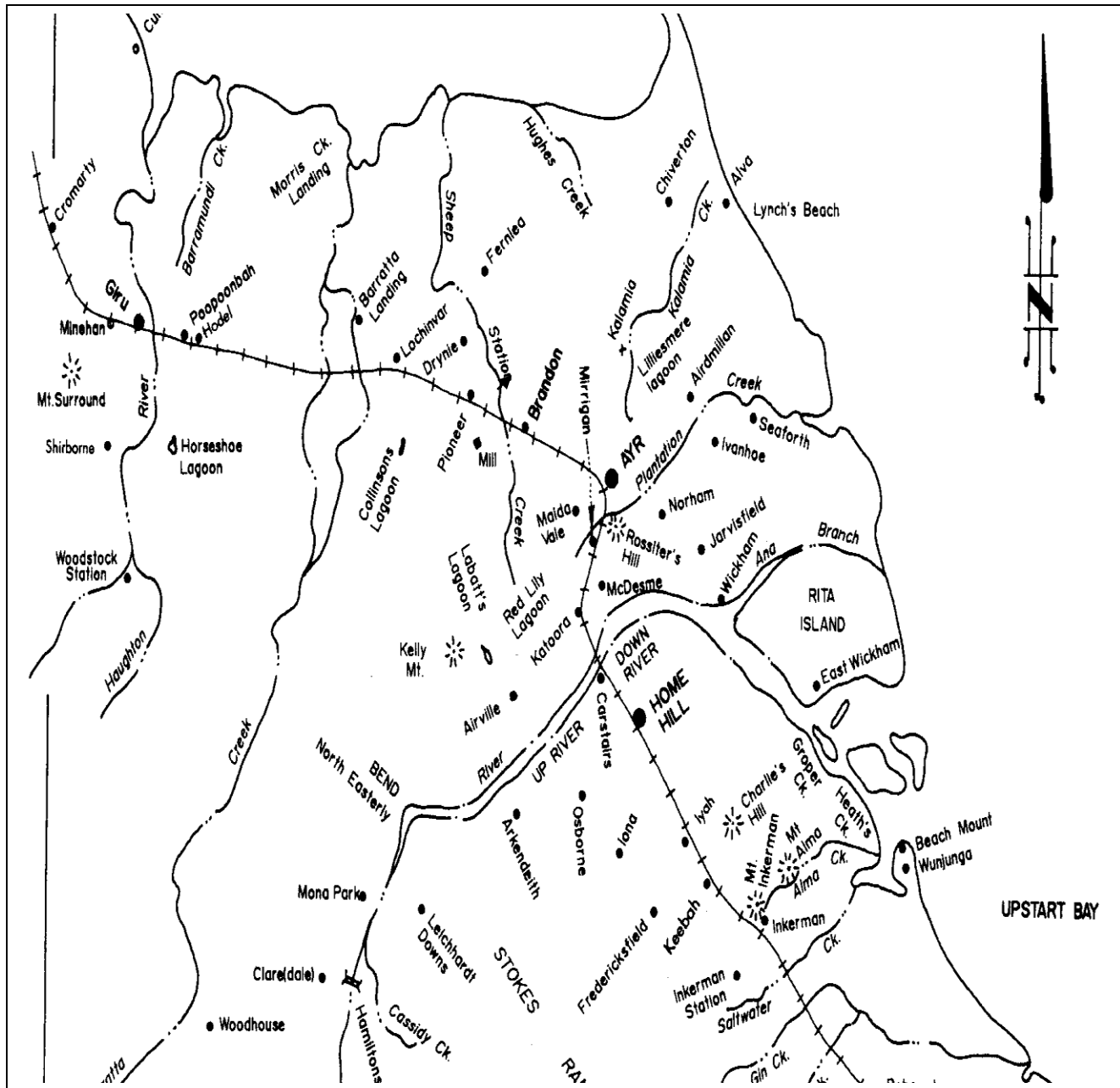
School Details Osborne State School
P.O. Box 217
Home Hill QLD 4806
Ph: 47826254 Fax: 47826265
Email: principal@osborness.eq.edu.au

School website: <https://osborness.eq.edu.au>

Find us on Facebook: Search 'Osborne State School' and click 'Like' to follow our school

Osborne State School is located on the corner of Kirknie Road and Osborne Road, approximately 8.5km up-river of Home Hill. The surrounding environment supports cane growing areas, small crops and cattle. Cane fields dominate the scenery.

Home Hill, to the southeast and Ayr to the northeast, are the nearest centres to the school. The Burdekin River separates these two towns.



FACILITIES

Indoor curriculum delivery is within the two air-conditioned learning areas. The original high-set building is predominantly used as the classroom and computer lab – student to computer ratio 1: 1 ½. The children work in multi-age groups. All year levels from Prep – Yr 6 are catered for. The office, staff room and reception areas are also located in this building (stairs furthest from the gate). The new low set building houses the Resource Centre (Library). All resources are of high quality and up to date.

An open – air hall is used as a play area during the day and a function area on special occasions. The school also has a well cared for tennis court, oval, cricket pitch, netball court, junior and senior playgrounds. Shady trees and covered play areas provide welcome relief from the sun.

THE COMMUNITY

Membership to the P & C is open to all parents and interested community members over 18 years. Meetings are held once a month. If you wish to join the P & C you need to fill out a Membership form available at the office or from the P & C. Fundraising activities held throughout the year enhance the school's resources and support the children's educational experiences e.g. excursions, camps.

Parents are welcome in the classroom as volunteers to assist across the Key Learning Areas. Parents also transport the children to and from many venues providing the children with opportunities to participate in a wide range of learning opportunities.

STAFFING ALLOCATION

- Teaching Principal (6 days teaching / 4 days administration per fortnight)
- Classroom Teacher (4 days a fortnight)
- Support Teacher Literacy and Numeracy - visits regularly throughout the year to work with the teaching staff and students around Literacy and Numeracy development
- 3 Teacher Aides
- 1 Administration Officer
- 1 Cleaner
- 1 Casual Grounds Officer

The school has access, on request, to other specialist services such as Guidance Officers, Behaviour Support Teachers, Speech and Occupational Therapists etc.



CURRICULUM PROGRAMS AND DELIVERY

A whole school approach to program design and delivery ensures consistency of assessment and monitoring of student outcomes. In 2016, English, Mathematics, Science, Geography, The Arts, Health and Physical Education and History will be taught from the Australian Curriculum. Teaching strategies aim to maximize learning outcomes for all students and are designed to cater for the variety of learning styles and individual differences within the school / class groups. Intervention programs are designed for children “at risk”. All programs and student outcomes are continually monitored to ensure the effectiveness and appropriateness of teaching strategies.

Participation in extra-curricular activities e.g. interschool sport, competitions, and eisteddfods are supported and encouraged.

* *LOTE – Japanese from 2012 (for Yr 5 and 6 via flexible online delivery).*

REPORTING



SCHOOL REPORTS

Term 1: Oral reporting.

Term 2: Written report.

Term 3: Oral reporting.

Term 4: Written report.

At other times reports / interviews will be given on request.

OTHER ACADEMIC REPORTS

National Testing/NAPLAN (Literacy & Numeracy) Yr 3 & 5.

SCHOOL RULES

We believe that it is important that members of Osborne State School conduct themselves in a manner, which enables all school members to work. Essential to learning are:

- The rights of all students to learn
- The rights of all teachers to teach
- The rights of all to be safe.

Our school follows the 3Bs:

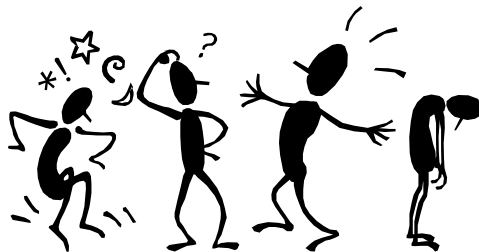
1. Be Respectful
2. Be Responsible
3. Be Safe
4. Be Brave!

Code of Conduct

1. I will take responsibility and care for people's feelings and belongings.
2. I will be courteous towards others.
3. I will cooperate with all other people in the school community.
4. I will make sure my behaviour respects and considers others.
5. I will give all school activities my best effort and use common sense at all times.
6. I will show, in my behaviour, that I am proud of Osborne State School.

Rules cannot cover the whole spectrum of possibilities. Any activities or actions, not covered by the above rules and code, which adversely affect the 'good order', safety and wellbeing of others, are unacceptable.

A Responsible Behaviour Plan for students is available on request and is also available on our school website.



SCHOOL UNIFORMS

The wearing of the school uniform is strongly encouraged.

HATS: Broad Brimmed - **NO CAPS!**

SHOES: Must be closed-in variety.

GIRLS / BOYS: Orange Polo Shirt with black collar and black shorts (girls can wear black skirts or skorts if they wish).

The Orange Shirts are available for purchase through the school P& C Association. Shirts are kept at the school office and can be purchased on Thursdays or Fridays during the school year between 9:00am and 3:00pm.

Kid's sizes: 4 - 16Y \$26.80

Adult sizes: 14 – 20 \$29.00

GENERAL NOTICES

School Lesson Times

First Session	8:30a.m. - 11.00a.m.
Healthy Snack	9:50am – 10:05am
First Break	11.05a.m. - 11.45a.m.
Middle Session	11.45a.m. -1.30p.m.
Second Break	1.30p.m. - 2.00p.m.
Last Session	2.00p.m. - 3.00p.m.

Please note: No students are to arrive at school before 8.00a.m.

Forms to be filled in on enrolment.

1. **Education Queensland Application for Student Enrolment:** Allows the student to be enrolled and registered with Education Queensland (only completed on enrolment or if transferring from another school).
2. **Enrolment Agreement:** This outlines student, parent and school responsibilities (only completed on enrolment or if transferring from another school).
3. **Internet Agreement:** This gives permission for your child to access the computers and the internet for learning activities (only done on enrolment or if transferring from another school).
4. **Media Release:** This gives the school permission to publish your child's name or photo in school newsletters and on the school website (only completed on enrolment or if transferring from another school).
5. **Excursion and private transport permission:** completed yearly, this form gives permission for your child to participate in all school excursions throughout the year.
6. **Resource Scheme Agreement:** completely yearly, this agreement means that your child will be provided with all stationary and books needed to complete their schooling throughout the year, providing the fee is paid.

Sign In All visitors / volunteers at the school must sign the registration book located in the reception area.

Absences must be explained. A written note, e-mail message or telephone call is sufficient.

Newsletters will be given fortnightly on a FRIDAY to the eldest in the family.

Healthy Snack is at 9:50am daily, students are allowed to eat half a sandwich or a piece of fruit and are also involved a variety of physical activities during this time.

Swimming occurs in Term 4 (eight weeks per term) at the Home Hill pool under the guidance of the a qualified swimming instructor.

First aid assistance will be administered to your child in the event of injury and if deemed to need further treatment you will be contacted to make arrangements.

Medication cannot be administered if all medication details are not provided with a signed declaration from parents. Medication must be in the original container with all instructions clearly visible. You will need to fill in an Administration of Medication Form available at the Office. All non prescription medication cannot be administered without a pharmacy label. Children should, at no time, have medications in their possession at school with the exception of personal asthma puffers.

Head Lice can appear at any time on anyone. They are not a sign of bad hygiene but they are pests. Please check your child's hair regularly and treat appropriately. Your pharmacist will be able to give you advice on the variety of treatments available.

Jewelry Students are allowed to have ear piercings (studs / sleepers only) and they can wear a watch. All other jewelry is not allowed due to safety concerns.

Cosmetics Students are not allowed to wear makeup or nail polish / accessories.

Electronics All electronic devices (e.g. Ipods, mobile phones etc) are not allowed at school.

Lost property could be easily returned to owners if all items are clearly labeled with your child's name.